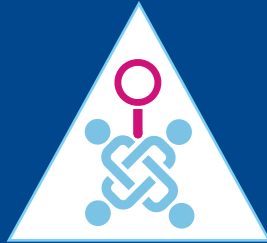
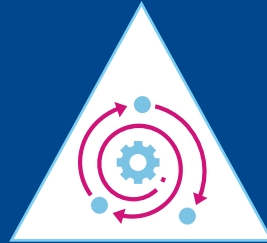


# Checklist for cyber resilience

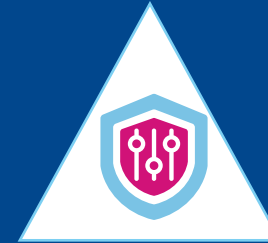
To a large degree, the biggest challenge that embedding resilience brings to cybersecurity functions is cultural and one of mindset. But there are also practical steps to consider:



Facilitate cross-departmental collaboration to identify resilience objectives of important business services, taking into account credible loss events, and failures. This should also account for associated business impacts.

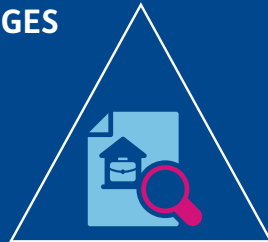


Ensure an operating model is in place that enables the autonomy and agility required for effective decision-making and continuous improvement.



Automated security activity and controls where possible to ensure the real expertise are focussed on complex, high-risk, or high-value activities.

## WFH CYBER CHALLENGES



Establish a documented working-from-home (WFH) security policy, including requirements, guidelines, hotlines and additional training opportunities



Comprehensive antivirus software that offers automatic remote working security against 'zero-day' attacks, malware, spyware and viruses; Trojans and worms; phishing; and transparency on threats across the satellite perimeter



Keep work laptops for work not family use



Strong VPN



Strong authentication/multifactor. Use smart cards or tokens



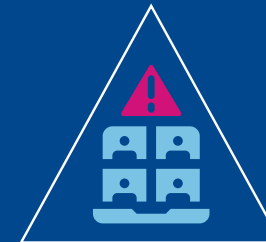
Ensure strong password policy that includes use of strong passwords and frequent updates to the passwords, blocking reuse of prior passwords



Teach employees how to configure their wireless routers and personal firewalls to keep their home networks secure



Implement a centralized storage solution, like Microsoft cloud, and ensure your employees to store work materials in the cloud



Be aware of video conferencing security risks an implement risk mitigation measures:

- ▶ Security flaws in some conferencing apps allow for hackers to listen in on calls (i.e. Zoom)
- ▶ Use passwords for calls or the admit feature to allow people into the call
- ▶ Ensure latest patches/software updates are installed for these applications